

# Average Sale Price by Month

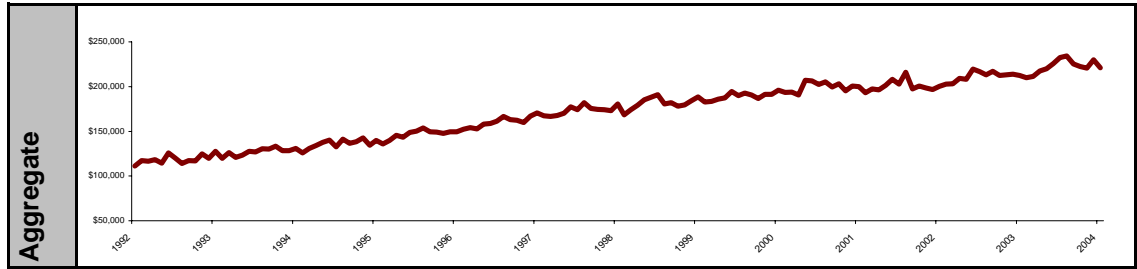
Statistics reported in this document cover those residential listings entered into RMLS™ databases from the Portland metro area, Oregon.



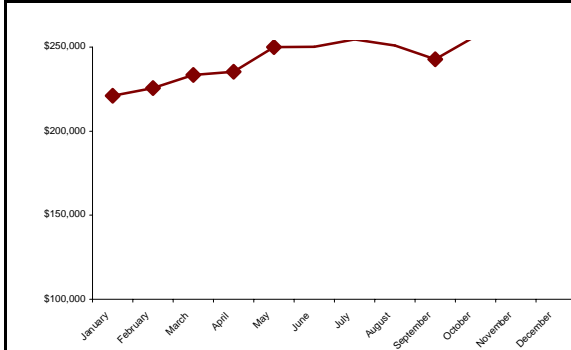
Document #: 1523

Revision Date: 1/17/2005

Pages in file: 4 pages

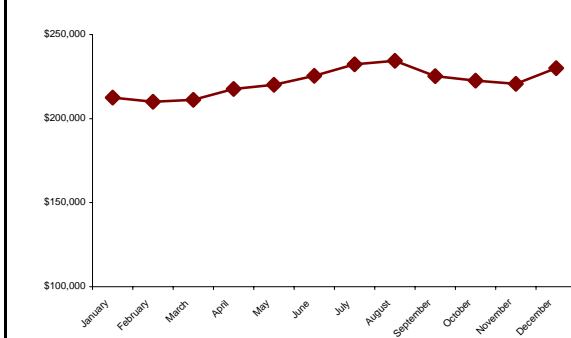


## 2004: \$246,000



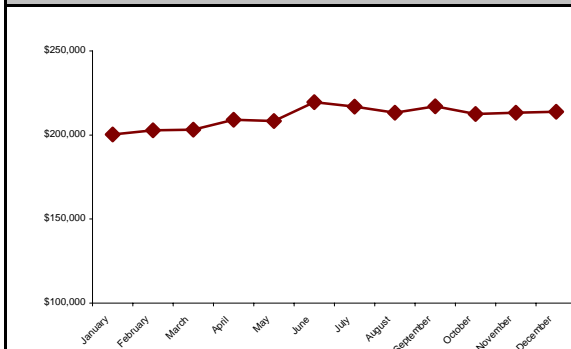
Month	Average Sale Price	Change from Previous Month
January	\$221,000	-4.0%
February	\$225,600	2.1%
March	\$233,500	3.5%
April	\$235,300	0.8%
May	\$250,000	6.2%
June	\$250,200	0.1%
July	\$254,600	1.8%
August	\$250,900	-1.5%
September	\$242,800	-3.2%
October	\$256,500	5.6%
November	\$266,600	3.9%
December	\$254,900	-4.4%

## 2003: \$222,500

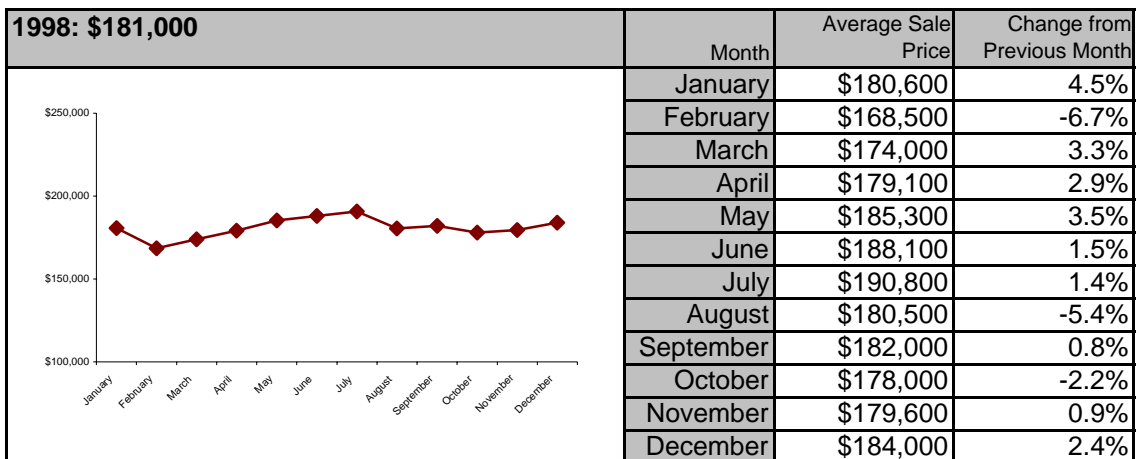
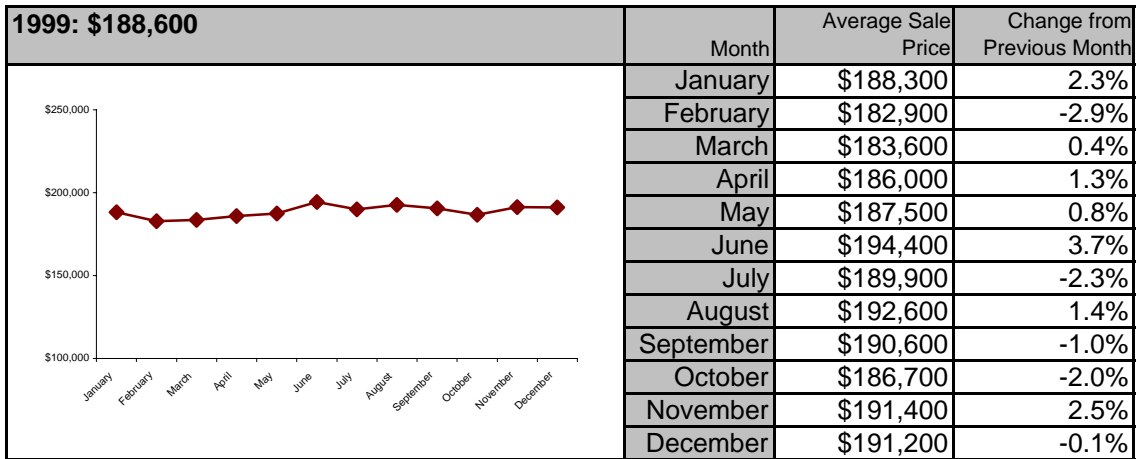
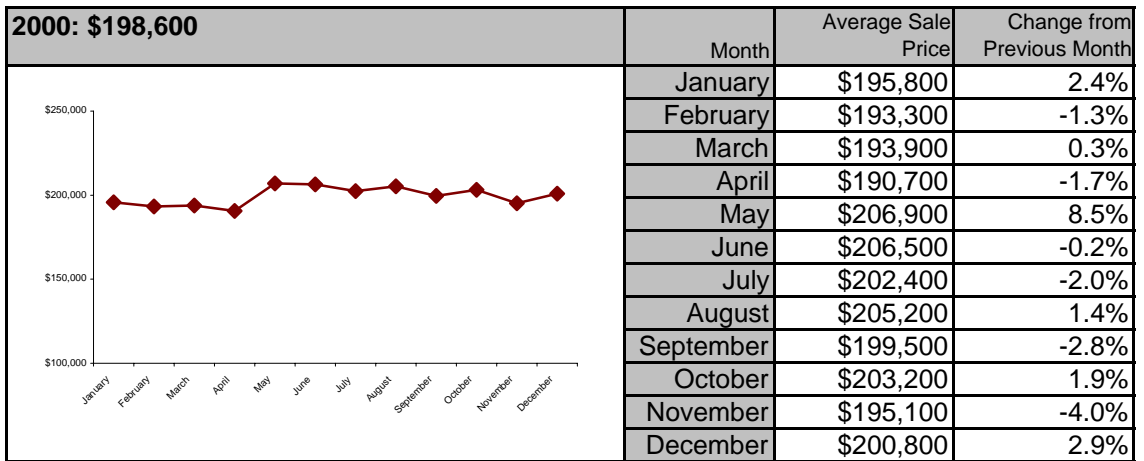
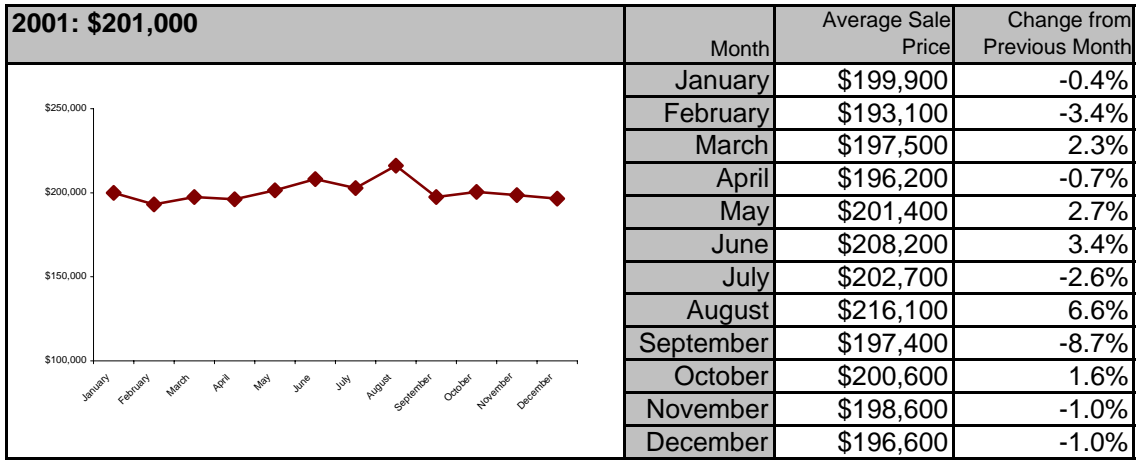


Month	Price	Previous Month
January	\$212,500	-0.7%
February	\$210,100	-1.1%
March	\$211,200	0.5%
April	\$217,600	3.0%
May	\$220,100	1.1%
June	\$225,500	2.5%
July	\$232,300	3.0%
August	\$234,400	0.9%
September	\$225,300	-3.9%
October	\$222,500	-1.2%
November	\$220,600	-0.9%
December	\$230,100	4.3%

## 2002: \$210,700



Month	Average Sale Price	Change from Previous Month
January	\$200,300	1.9%
February	\$202,800	1.2%
March	\$203,100	0.1%
April	\$209,100	3.0%
May	\$208,300	-0.4%
June	\$219,600	5.4%
July	\$216,900	-1.2%
August	\$213,300	-1.7%
September	\$217,100	1.8%
October	\$212,500	-2.1%
November	\$213,200	0.3%
December	\$213,900	0.3%

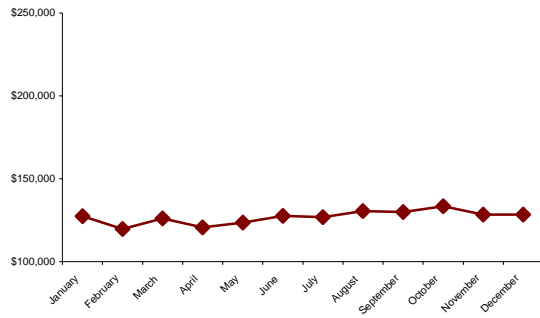


<b>1997: \$173,000</b>		Average Sale Price	Change from Previous Month
	Month		
	January	\$170,700	2.3%
	February	\$167,400	-1.9%
	March	\$166,700	-0.4%
	April	\$167,700	0.6%
	May	\$170,100	1.4%
	June	\$177,300	4.2%
	July	\$174,100	-1.8%
	August	\$182,100	4.6%
	September	\$175,500	-3.6%
	October	\$174,400	-0.6%
	November	\$174,200	-0.1%
	December	\$172,900	-0.7%
<b>1996: \$158,900</b>		Average Sale Price	Change from Previous Month
	Month		
	January	\$149,300	-0.1%
	February	\$152,200	1.9%
	March	\$154,000	1.2%
	April	\$152,800	-0.8%
	May	\$158,100	3.5%
	June	\$158,900	0.5%
	July	\$161,200	1.4%
	August	\$166,500	3.3%
	September	\$163,100	-2.0%
	October	\$162,300	-0.5%
	November	\$159,900	-1.5%
	December	\$166,900	4.4%

<b>1995: \$145,700</b>		Average Sale Price	Change from Previous Month
	Month		
	January	\$139,900	4.1%
	February	\$135,900	-2.9%
	March	\$139,800	2.9%
	April	\$145,500	4.1%
	May	\$143,300	-1.5%
	June	\$148,600	3.7%
	July	\$150,200	1.1%
	August	\$153,700	2.3%
	September	\$149,300	-2.9%
	October	\$149,000	-0.2%
	November	\$147,500	-1.0%
	December	\$149,500	1.4%

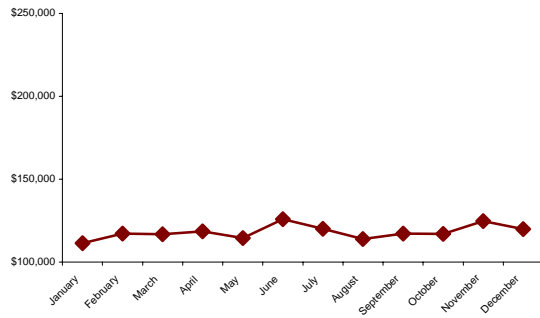
<b>1994: \$134,200</b>		Average Sale Price	Change from Previous Month
	Month		
	January	\$130,800	1.9%
	February	\$125,800	-3.8%
	March	\$131,000	4.1%
	April	\$134,200	2.4%
	May	\$137,700	2.6%
	June	\$140,300	1.9%
	July	\$132,600	-5.5%
	August	\$141,400	6.6%
	September	\$136,500	-3.5%
	October	\$138,500	1.5%
	November	\$142,700	3.0%
	December	\$134,400	-5.8%

**1993: \$123,400**



Month	Average Sale Price	Change from Previous Month
January	\$127,500	6.3%
February	\$119,600	-6.2%
March	\$126,100	5.4%
April	\$120,700	-4.3%
May	\$123,500	2.3%
June	\$127,700	3.4%
July	\$126,800	-0.7%
August	\$130,500	2.9%
September	\$130,000	-0.4%
October	\$133,400	2.6%
November	\$128,300	-3.8%
December	\$128,400	0.1%

**1992: \$116,300**



Month	Average Sale Price	Change from Previous Month
January	\$111,300	n/a
February	\$117,200	5.3%
March	\$116,700	-0.4%
April	\$118,500	1.5%
May	\$114,400	-3.5%
June	\$125,800	10.0%
July	\$120,000	-4.6%
August	\$113,900	-5.1%
September	\$117,200	2.9%
October	\$116,900	-0.3%
November	\$124,700	6.7%
December	\$119,900	-3.8%